

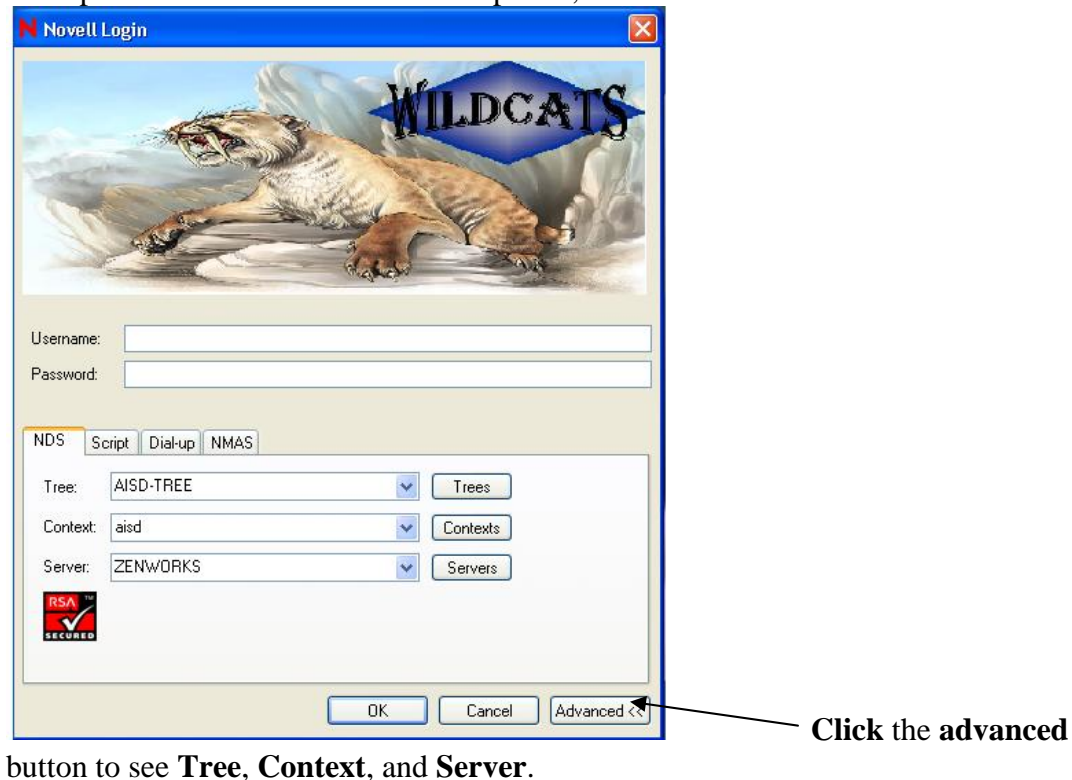
# How to log in to Anthony ISD computers.

Novell and Windows login screens.



The Novell Login screen will be the first login screen you see. The Novell Login screen will login you on to the network and the windows login, logs you on to the workstation (computer only, not the network).

To expand the window to see all the options, **Click the advanced** button.



button to see **Tree, Context, and Server.**

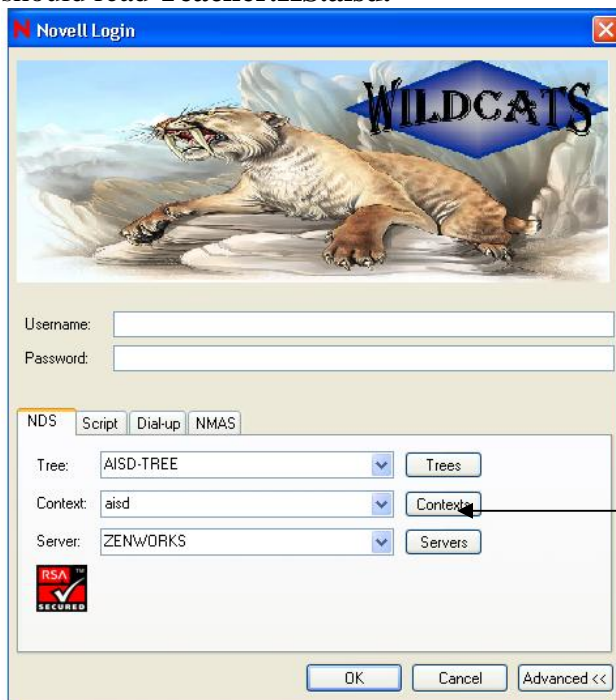
## Let's login!

Example: Willy Wonka, a high school teacher.  
The Novell Login screen.



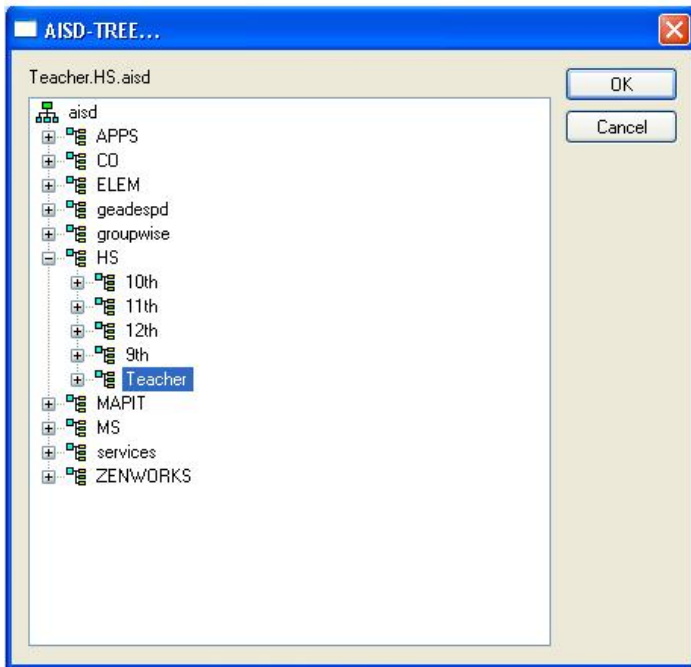
**For username, use First Initial and Last name (ex: Willy Wonka = wwonka)**

Next, Willy will need to check that he is in the proper **Context**, Click the **advanced** button to display additional information. Willy is a high school teacher, so the **Context** should read **Teacher.HS.aisd**.



Click here display context

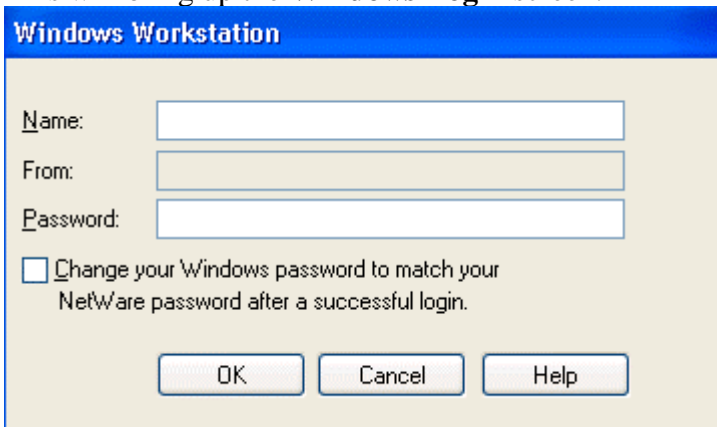
The Context is not right for Willy, so to change the **Context**, **Click the Context** button. The Context window will appear.



Willy will need to expand the **aisd** context, then the **HS** context, and finally select the **teacher** Context and **Click OK**.

Lastly **Click OK** at the Novell login screen.

This will bring up the **Windows Login** screen.



At this screen you will need to type in the username and password for the Windows workstation, which is **NOT** the same for the Novell Login screen.

### Username

teachers = teacher

students = student

## How to login when you're not on the network.

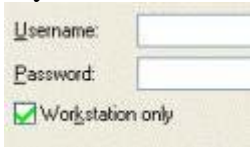
If you have a school laptop and you're not on the campus you will need to use the workstation only button. It is located under the username and password fields of the Novell login screen.



A screenshot of a Novell login screen. It features two input fields: 'Username:' and 'Password:'. Below these fields is a checkbox labeled 'Workstation only'. The checkbox is currently unchecked. A black arrow points upwards from the text below to the checkbox.

Workstation only button.

If you have the workstation only button selected it will have a check mark in the box.



A screenshot of a Novell login screen, similar to the one above. The 'Workstation only' checkbox is now checked, indicated by a green checkmark inside the box.

At this point all you have to do is enter the workstation username and password.

EX.

Username: teacher

Password: \*\*\*\*\*